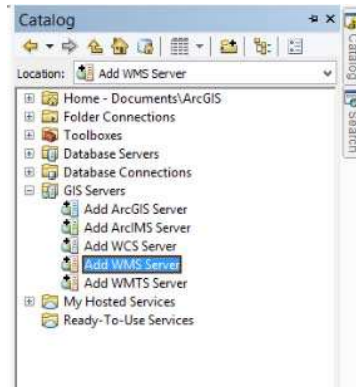
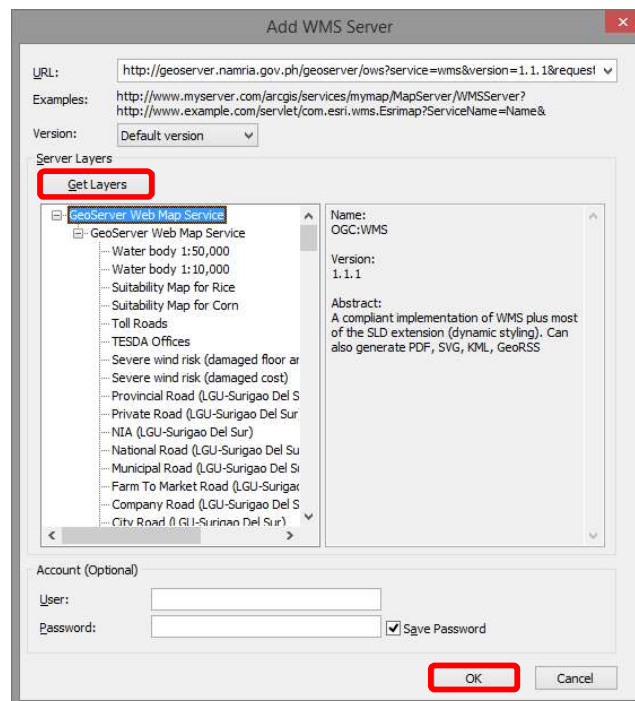


How to Consume Philippine Geoportal Layers in ArcGis

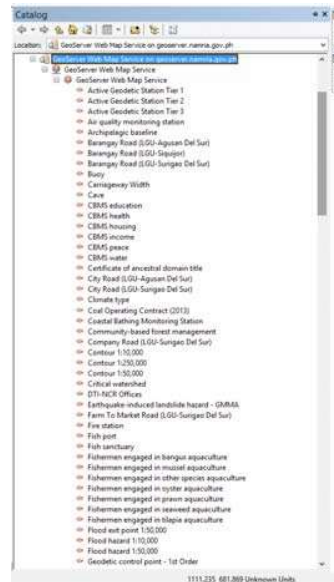
1. In the Catalog window (ArcMap) or Catalog Tree (ArcCatalog), expand the GIS Servers node and double-click **Add WMS Server**.



2. In the following screen enter the url:
<https://geoserver.geoportal.gov.ph/geoserver/ows?service=wms&version=1.1.1&request=GetCapabilities>
and then click **Get Layers**. The list of available layers will be displayed. Click Ok to add the GP web map service.



3. Click the GIS Server connection to expand it. You'll see a series of GIS services in the tree view. Expand the Geoserver web map service on geoserver.geoportal.gov.ph folder.



4. Drag and drop the layer to view in ArcMap.

